



Cagnon Ground Storage Tank Replacement Project
Solicitation Number: CO-00436-SM
Job No.: 20-6010

ADDENDUM 3
9/21/2021

To Respondent of Record:

This addendum, applicable to work referenced above, is an amendment to the bid proposal, plans and specifications and as such will be a part of and included in the Contract Documents. Acknowledge receipt of this addendum by entering the Addendum number and issue date on the space provided in submitted copies of the Respondent Questionnaire.

Note change to deadline for questions:

For questions regarding this solicitation, technical questions or additional information, please contact Stella Manzello, Contract Administrator in writing via email to: Stella.Manzello@saws.org or by fax to (210) 233-4290 until **4:00 PM (CDT) on September 28, 2021**. Answers to the questions will be posted to the web site by **4:00 PM (CDT) on October 1, 2021** as a separate document or included as part of an addendum.

RESPONSES TO QUESTIONS

1. What are the dimensions of the old GST? (height x dia)

Response: *The existing GST has a nominal height of 34 feet and a diameter of 74 feet.*

2. I saw that the work is to start at or near the end of Segment 3 pipeline which is on a separate contract, and the demo is at the end of the Cagnon GST project.

a. When are you expecting the pipeline project to be complete?

Response: *The current contractual end date for construction of the Segment 3 Pipeline is July 11, 2022.*

b. Once the Cagnon project is awarded, submittals approved, when are you expecting to issue the NTP?

Response: *The project is anticipated to be on the SAWS Board December 2021 meeting agenda for award. The contract execution and Notice-to-Proceed are anticipated in early January 2022.*

c. How long is this contract? How many days? 350 days? 540 days?

Response: *Per the Price Proposal, Proposal Certification, and Contract, the overall contract duration is 530 Calendar Days.*

d. We're trying to gauge when the demo will occur? Oct? Jan? Aug?

Response: *Construction scheduling is up to the contractor. Specification 01040 provides a suggested sequence of construction and constraints including limitations on shutdowns that may affect the contractor's schedule.*

3. Are there as-built drawings of the old tank and foundation?

Response: *As-built drawings of the old tank and foundation are not available.*

4. How much foundation gets removed on the old GST? 2ft? 4ft? complete?

Response: *The entire tank foundation is to be removed including concrete, sand or gravel support material. See "Change to the Specifications" note 3, Specification 02060 – Demolition.*

5. Are we able to schedule a site visit?

Response: Yes, a non-mandatory pre-proposal site visit is scheduled on September 24, 2021 between 9:00 AM and 4:00 PM (CT) as detailed in Addendum No. 2 posted on September 20, 2021.

6. Multiple drawings state for review only, not for permitting, bidding, or construction. Can y'all provide the official bid set drawings?

Response: Yes, official bid set drawings were provided with Addendum No. 1 that was posted on September 7, 2021.

7. Please confirm that there are no 'Buy American' or AIS requirements required on this project.

Response: There are no "Buy American" or "American Iron and Steel" (AIS) requirement on this project.

8. Please confirm type of material for the Exterior Inlet Riser Pipe as detailed on drawing 54 of 92 sheet D-502. The pipe shall be Stainless Steel or Welded Steel?

Response: The exterior inlet riser pipe shall be coated welded steel. The portion of the pipe that penetrates the dome shall be 316 stainless steel. The carbon steel and stainless steel shall be connected using a dielectric isolation kit.

9. Please consider revising the tank coating specification (Section 09820-Part 2.01) to read:

"A) Decorative Coating System for Tank Dome:

1) Select one of two decorative coating systems:

a) System 1: (Precast concrete dome roof)

i) One coat cementitious based waterproofing product such as "Tamoseal" or approved equal, and one coat of non-cementitious, high build 100% acrylic resin polymer such as "Tammscoat" or approved equal

b) System 2 (Cast-In-Place dome roof)

ii) Two coats of non-cementitious high build 100% acrylic resin polymer such as "Tammscoat Smooth Coating Smooth" or equal?"

Response: The specified coating system can be applied to both cast-in-place and pre-cast domes. The coating specification shall remain unchanged.

CHANGES TO THE SPECIFICATIONS

1. REQUEST FOR COMPETITIVE SEALED PROPOSALS (RFCSP)

- DELETE first and second sentences of paragraph number five (5) in its entirety and REPLACE with the following: For questions regarding this solicitation, technical questions or additional information, please contact Stella Manzello, Contract Administrator in writing via email to: Stella.Manzello@saws.org or by fax to (210) 233-4290 until **4:00 PM (CDT) on September 28, 2021**. Answers to the questions will be posted to the web site by **4:00 PM (CDT) on October 1, 2021** as a separate document or included as part of an addendum.

2. SUPPLEMENTRY INSTRUCTIONS TO RESPONDENTS

- DELETE paragraph E.3.b.iv. in its entirety and REPLACE with the following: "Provide a description of the approach specifically addressing the procurement of the following items: 2 MG pre-stressed concrete ground storage tank, large (24-inch and larger) diameter pipe and valves, electrical components and other long-lead time equipment and devices."

3. SPECIFICATION 02060 – DEMOLITION

- DELETE 1.01.A paragraph in its entirety and REPLACE with the following:
"A. This Section covers the labor and materials necessary for the Work associated with demolition of existing structures and facilities as shown on the drawings, and specified herein including but not limited to:
 1. Demolition of existing ground storage tank and foundation including concrete, sand or gravel support material.
 2. Demolition of other structures and facilities as indicated."
- ADD the following language immediately after paragraph 1.06.C:
"D. There are no as-built drawings for existing ground storage tank and foundation."

- ADD the following language immediately after paragraph 1.07.E:
“F. Protect and maintain all remaining structures in the vicinity of the existing ground storage including, but not limited to, the existing high service pump station pumps, motors, piping and valves, well pumps and piping, underground utilities, electrical and SCADA racks, communication tower, and any other facilities to remain.”
- ADD the following language immediately after paragraph 3.02.F:
“G. Remove the entire tank foundation including concrete and any sand or gravel support material.”

4. SPECIFICATION 15141 – COUPLINGS, CONNECTORS AND ADAPTERS

- DELETE paragraph 2.02.H.1.d in its entirety and REPLACE with the following:
 - “d. Acceptable Manufactures
 - i. The Metraflex Company
 - ii. Flexicraft Industries
 - iii. U.S. Bellows, Inc.
 - iv. Or approved equal
 - e. Minimum axial movement: 1.5 inches
 - f. Minimum lateral movement: 0.1 inches”

CHANGES TO THE PLANS

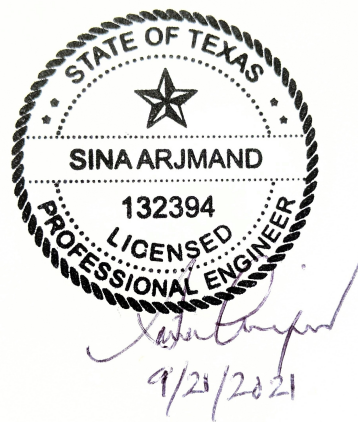
1. REMOVE Drawing C-311 – Pump Station Suction Header in its entirety from Plan Set and REPLACE with the attached drawing.

CLARIFICATIONS

1. None.

END OF ADDENDUM

This Addendum, including these three (3) pages, is four (4) pages with attachments in its entirety. Attachments.

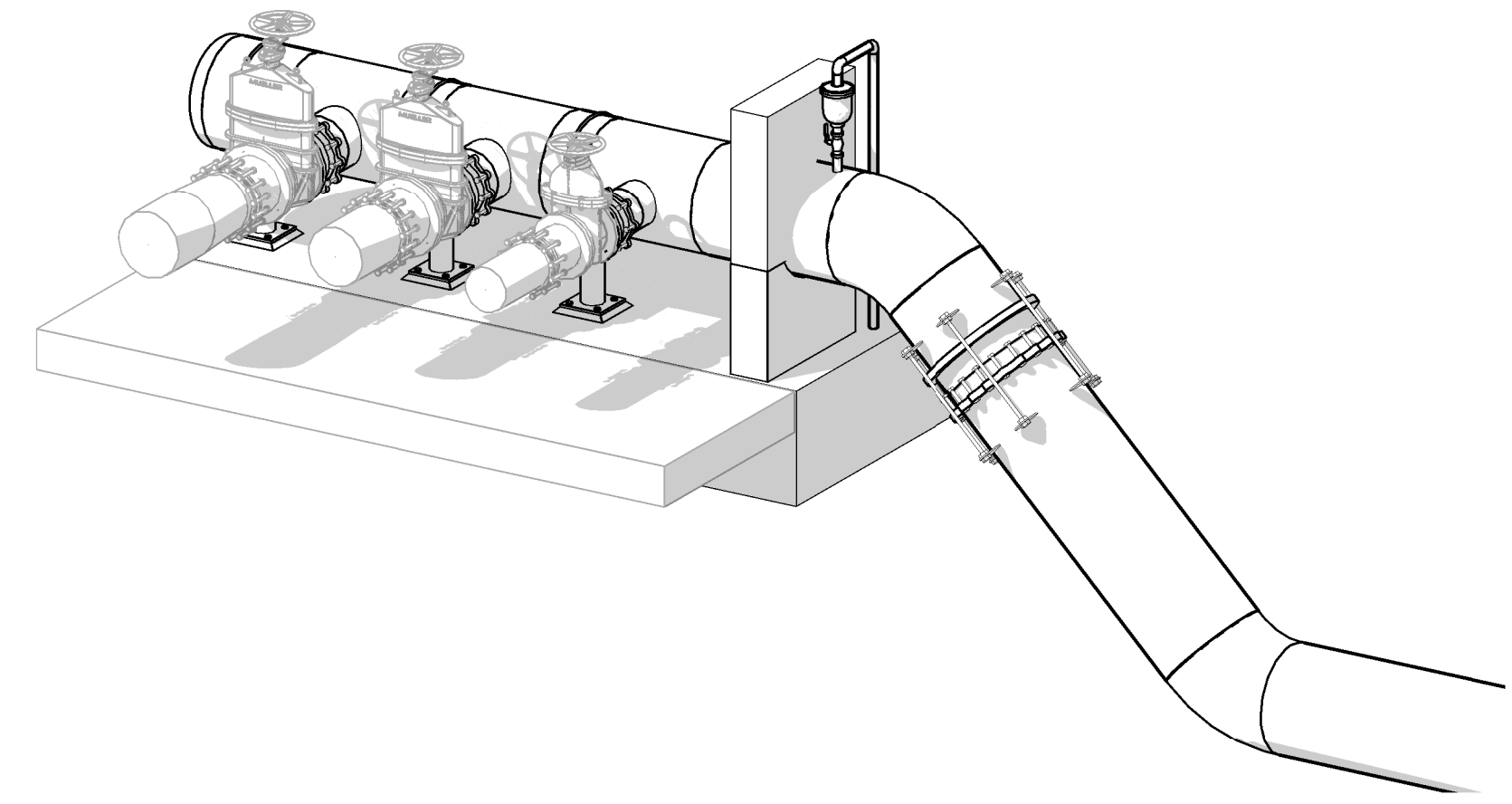


Sina Arjmand, P.E.
Tetra Tech



1
PUMP STATION SUCTION
DEMOLITION
NTS

EXISTING VALVES TO REMAIN.
CLOSE AND PROTECT VALVES
DURING CONSTRUCTION.
SEE NOTE 2

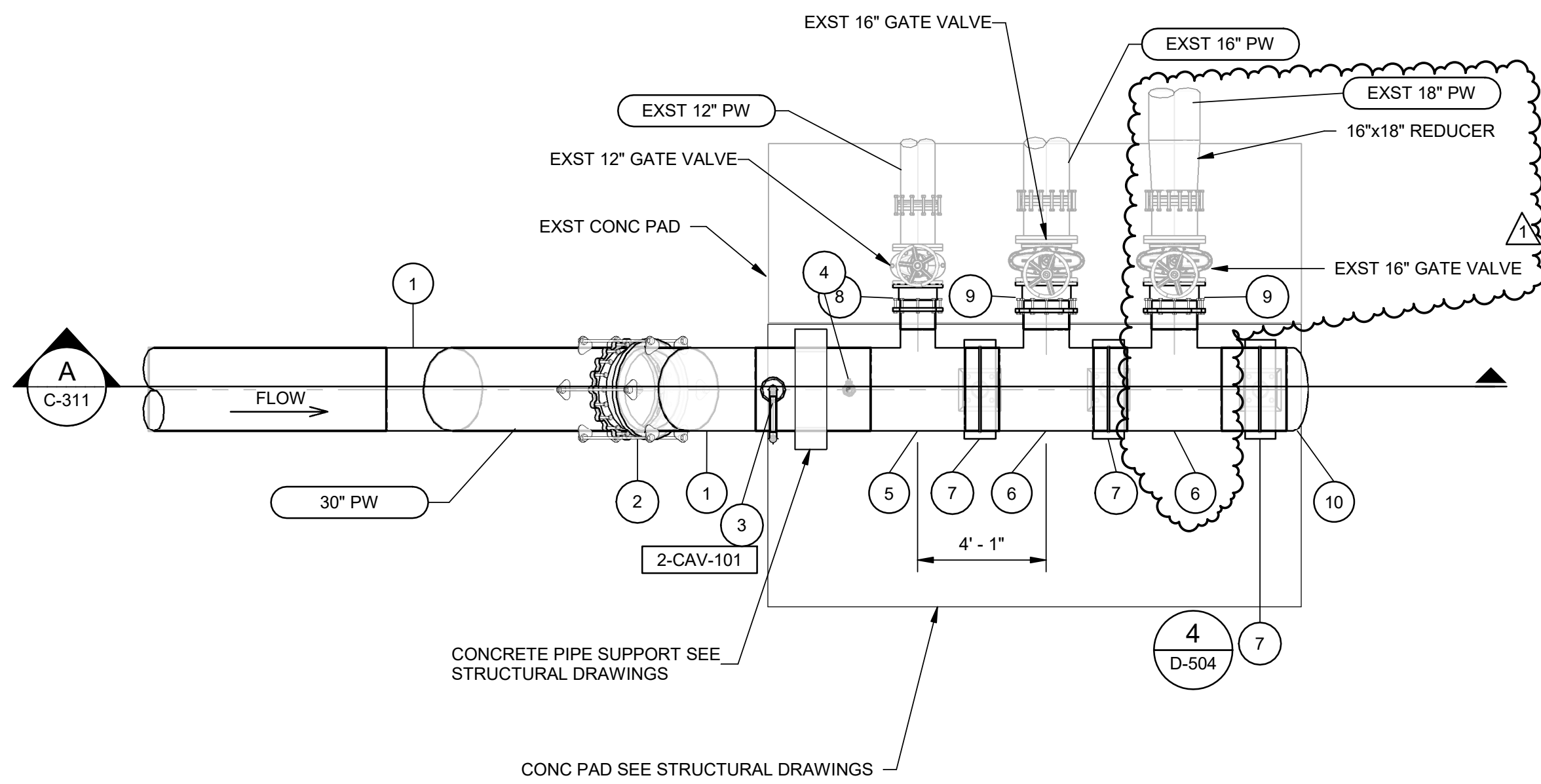


PS HEADER ISO VIEW
SCALE: NTS

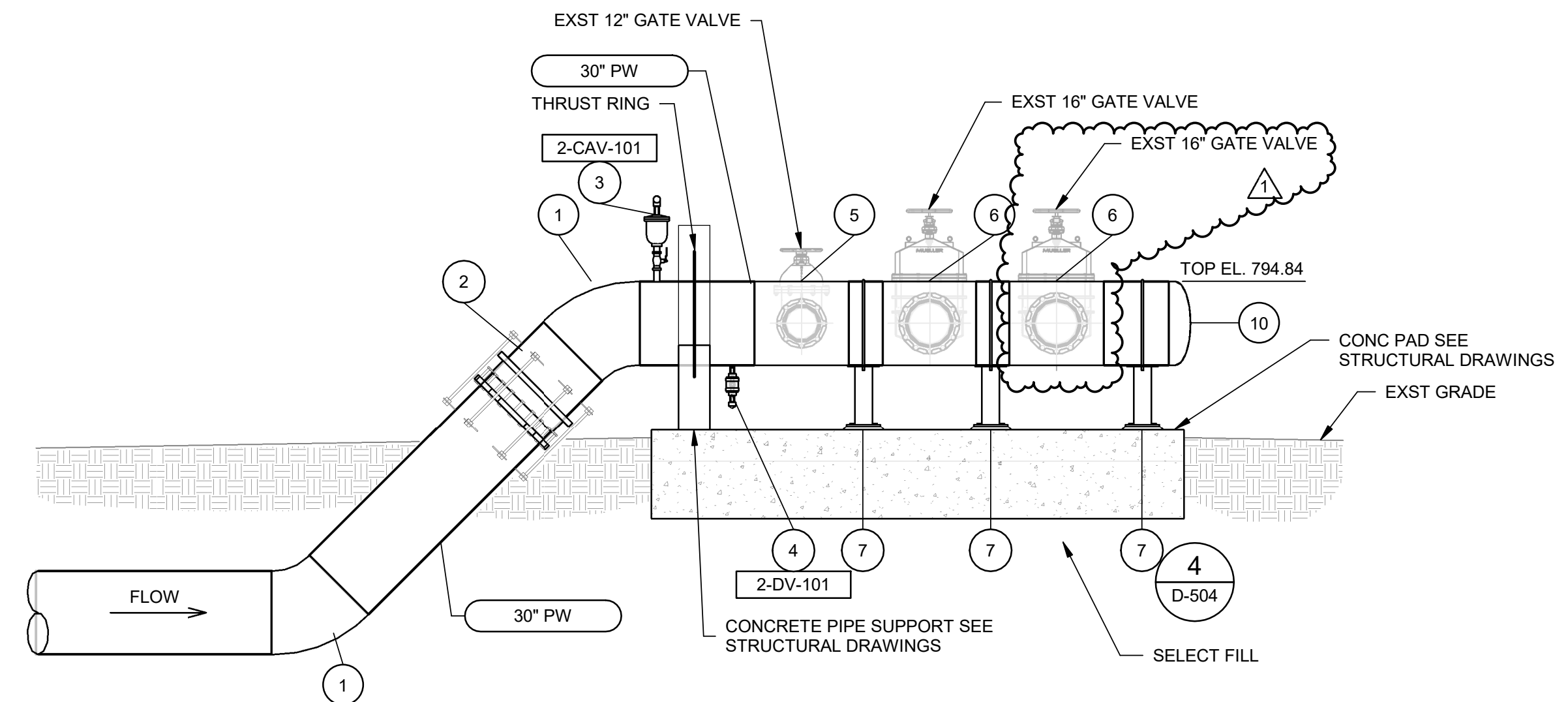
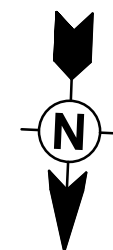
FITTING LIST	
TAG	DESCRIPTION
1	30" 45° BEND
2	30" HARNESSED MECHANICAL COUPLING
3	2" COMBINATION AIR RELEASE VALVE
4	2" DRAIN VALVE
5	30"x30"x12" TEE
6	30"x30"x16" TEE
7	PIPE SUPPORT
8	12" FCA W/ THRUST HARNESS
9	16" FCA W/ THRUST HARNESS
10	30" WELDED STEEL BULKHEAD

NOTES:

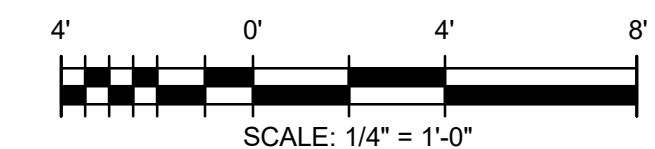
1. THE SLAB SHALL BE MINIMUM 4" ABOVE FINISHED GRADE. SEE STRUCTURAL DRAWING SHT S-106 FOR SLAB DESIGN.
2. ISOLATE CONNECTION TO TANK AND PLUG/CAP EXISTING GATE VALVES PRIOR TO TANK DEMOLITION. PROTECT EXISTING PUMPS, VALVES AND ALL REMAINING PIPING DURING DEMOLITION AND CONSTRUCTION.
3. VERIFY ELEVATIONS AND DIMENSIONS FOR THE EXISTING ABOVE GRADE SUCTION HEADER.



2
PUMP STATION SUCTION
HEADER
SCALE: 1/4" = 1'-0"



A
PUMP STATION SECTION
C-311 SCALE: 1/4" = 1'-0"



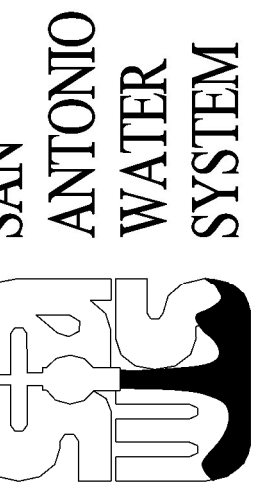
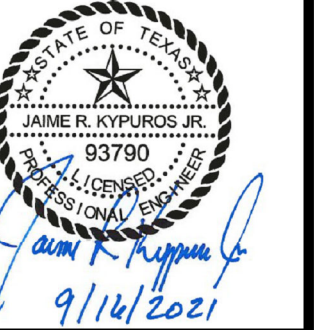
Bar measures 1 inch, otherwise drawing is not to scale

9/16/2021 4:43:21 PM C:\Projects\San Antonio\09308\200-09308-19001-04\CAD\BIM\ModelFiles\09308-D-PRV-2021-CAGNON.rvt



711 NAVARRO STREET, SUITE 560
SAN ANTONIO, TEXAS 78205
TEL: (210) 299-7900 FAX: (210) 226-9467

BID SET



BY

SGG

MARK DATE DESCRIPTION
1 09/17/21 ADDENDUM NO. 2

SAN ANTONIO WATER SYSTEMS
CAGNON RD GROUND STORAGE TANK
REPLACEMENT PROJECT
PUMP STATION SUCTION
HEADER

PROJ: 200-09308-19001-04
DESN: SA
DRWN: BE
CHKD: MWB

C-311

Copyright: Tetra Tech